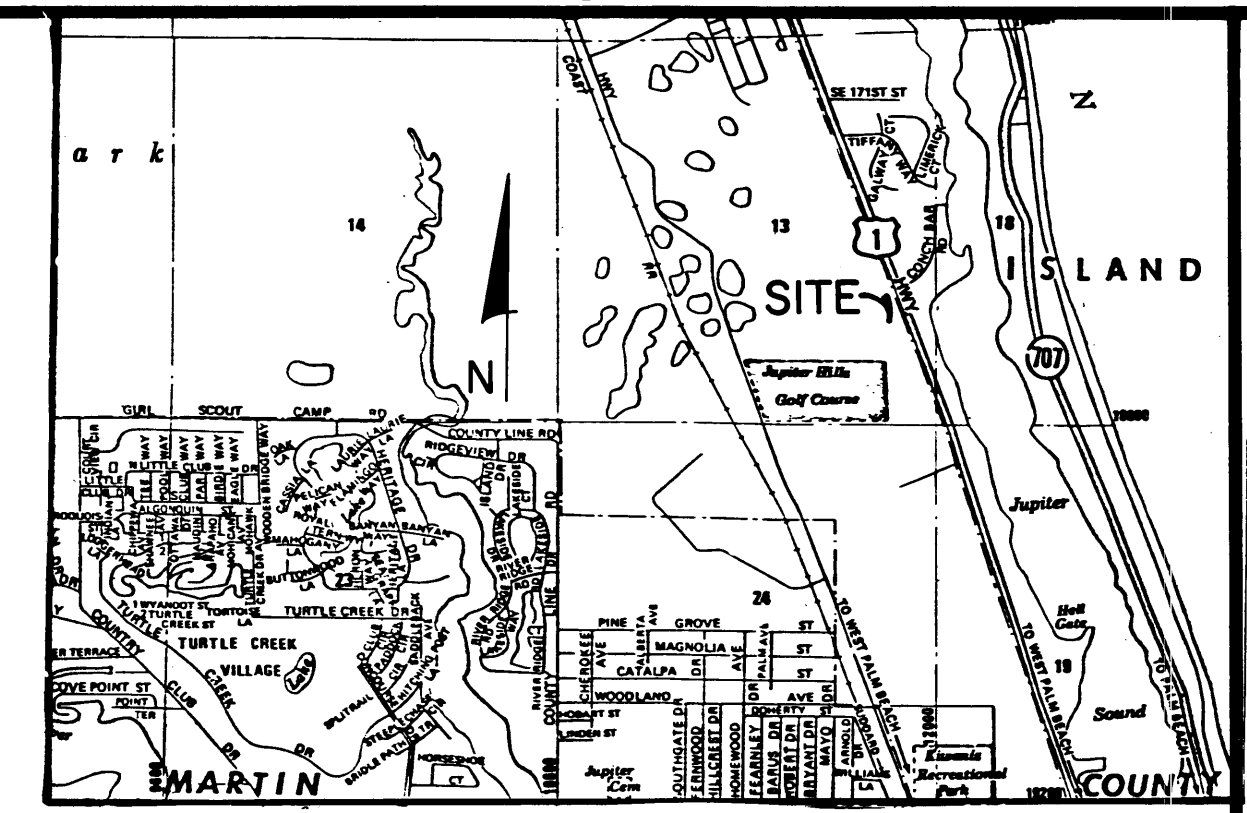


A PLAT OF JUPITER HILLS VILLAGE I, FORMERLY A CONDOMINIUM

MAY, 1985

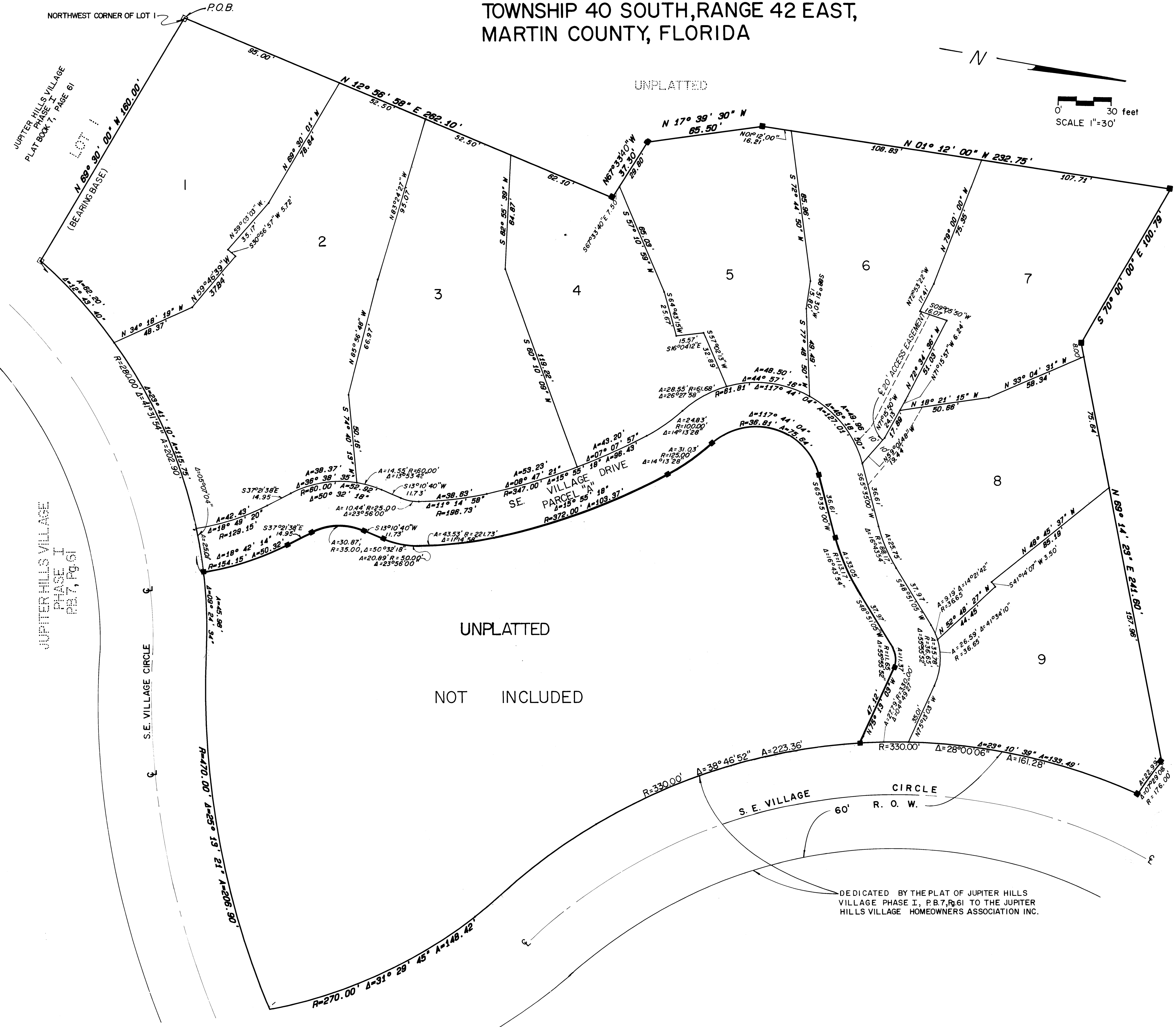
BEING A PORTION OF SECTION 13,
TOWNSHIP 40 SOUTH, RANGE 42 EAST,
MARTIN COUNTY, FLORIDA



I, LOUISE V. ISAACS,
CLERK OF THE CIRCUIT COURT
OF MARTIN COUNTY, FLORIDA,
HEREBY CERTIFY THAT THIS
PLAT WAS FILED FOR RECORD
IN PLAT BOOK 10, PAGE 17,
MARTIN COUNTY, FLORIDA,
PUBLIC RECORDS, THIS
DAY OF _____, 1985.

LOUISE V. ISAACS, CLERK
CIRCUIT COURT
MARTIN COUNTY, FLORIDA

BY: _____
FILE NO. _____



UNPLATTED
NOT INCLUDED

UNPLATTED

- LEGEND**
- = EXISTING PERMANENT REFERENCE MONUMENT (P.R.M.)
 - = SET PERMANENT REFERENCE MONUMENT (P.R.M.)

BEARING BASE, THE NORTHERLY LOT LINE OF LOT NO. 1, AS SHOWN ON THE PLAT OF JUPITER HILLS VILLAGE, PHASE I, AS SHOWN HEREON, IS TAKEN TO BE N69° 30' 00" W AND ALL OTHER BEARINGS ARE RELATIVE THERETO.

DEDICATED BY THE PLAT OF JUPITER HILLS VILLAGE PHASE I, P.B.7, P.61 TO THE JUPITER HILLS VILLAGE HOMEOWNERS ASSOCIATION INC.

LINDAHL, BROWNING, FERRARI & HELLSTROM, INC.
Consulting Engineers, Planners & Surveyors
JUPITER, FLORIDA STUART, FLORIDA
FORT PIERCE, FLORIDA